

Oval Inward Manhole With Bevel Edge



Product Introduction

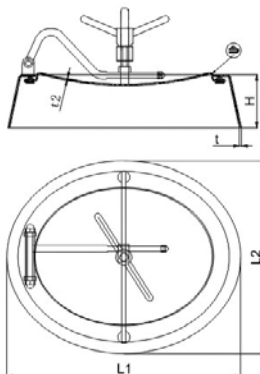
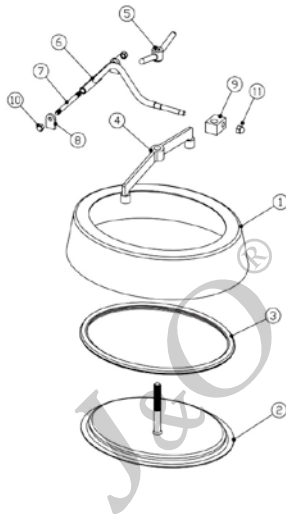
Features: Compared to ordinary inward manhole, this type of manhole is easy to clean and residues are not easily retained. It is suitable for equipment with high cleanliness requirements in fields such as food and pharmaceuticals, etc. Material is ensured by providing inspection reports.

Pressure Range: 0-0.4 MPa working pressure

Product material: SS304, SS316L

Surface Finish: mirror polish inside and outside, or mirror polish inside and matte polish outside

Applications: necessary accessories for equipment such as food tanks, beer tanks, etc.



JOF-MHO201

Parts List

No.	Description	Material	Quality
1	Frame	304 / 316L	1
2	Cover	304 / 316L	1
3	Gasket	Silicone	1
4	Bracket	304	1
5	Spanner Handle	304	1
6	Suspension Arm	304	1
7	Bolt	304	1
8	Support Lug	304	2
9	Hub	304 / ABS	1
10	Nut	304	2
11	Nut	304	1

Dimensions

Size	L	L2	H	t	t1	Pres (Bar)
550×450	550	450	80	5	4	1-3
550×450A	550	450	80	4	4	1-3
565×465	565	465	100	5	4	1-3
580×485	580	480	133	5	4	1-3

The height (H) and collar (t) can be customized on request