

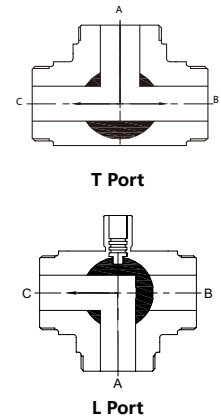
## 3-way Full Bore Encapsulated Ball Valve



**3-way Full Bore Encapsulated Ball Valve**



**Pneumatic 3-way Full Bore Encapsulated Ball Valve**



### Applications:

This kind of valve is widely used in the field of food processing, beverages, wine, biopharmaceutical etc.

### Design Features:

- The design of encapsulated seat with no retention and high cleanliness meets the requirements of CIP SIP sterilization and cleaning.

Working temperature: -40°C ~+ 150°C

Working pressure: 0-10 bar

- Seal Material: PTFE, conforming to FDA117.2600
- Connection: Clamp, Weld, Thread
- Control mode: manual, pneumatic, electric
- Size: 1"-4"
- Standard: 3A, DIN, SMS, IDF, RJT, BPE, ISO
- Regardless of the connection, the valve body can be replaced without changing the total length of the valve
- L-type and T-type can be replaced on site, and the direction of inlet and outlet can be combined in any way. Any combination can ensure non-retention and no dead angle.

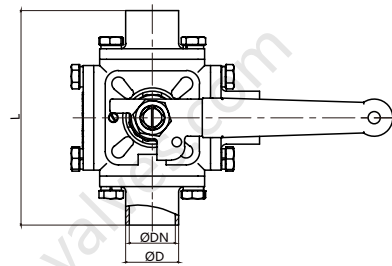
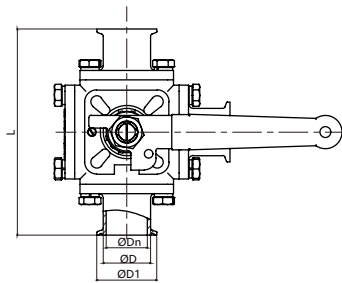
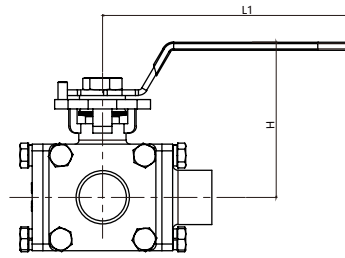
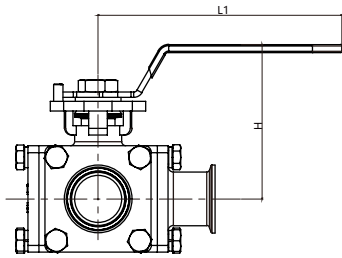
### Torque of 3-way Ball Valve

Size	1/2"-3/4"	1"/DN25	1.25"/DN3	1.5"/DN40	2"/DN50	2.5"-3"	DN65	DN80	4"/DN100
Torque/ N.M	10	15	20	25	35	50	75	95	120

Add 20% safety torque when use Actuator

# Sanitary Stainless Steel Ball Valve

J&O FLUID CONTROL CO., LIMITED



**JOV-BHM2011-22**

**JOV-BHM2011-11**

## 3-way Full Bore Encapsulated Ball Valve Weld/Clamp End

Size	ØDn	ØD	ØD1	L	L1	H
1/2"	9.4	12.7	25.2	118	135	77
3/4"	15.8	19.1	25.2	127	135	78
1"	22.1	25.4	50.5	152	135	95
1.25"	28.5	31.8	50.5	174	181	113
1.5"	34.8	38.1	50.5	174	181	113
2"	47.5	50.8	64	204	181	121
2.5"	60.2	63.5	77.5	227	181	135
3"	72.9	76.2	91	262	389	132
4"	97.4	101.6	119	319	489	149

Size	ØDn	ØD	ØD1	L	L1	H
DN15	15	18	34	118	135	77
DN20	19	22	34	127	135	78
DN25	25	28	50.5	152	135	95
DN32	31	34	50.5	174	181	113
DN40	37	40	50.5	174	181	113
DN50	49	52	64	204	181	121
DN65	66	70	91	227	181	135
DN80	81	85	106	262	389	132
DN100	100	104	119	319	489	149