

Butterfly Type Ball Valve



**Manual Clamped
Butterfly Type Ball Valve**



**Manual Clamped Butterfly
Type Ball Valve With Drain**

Applications:

This type of valve is a kind of automatic or manually operated butterfly type ball valve, which is widely used in the fields of food, beverage, wine making, pharmaceutical and chemical industry because it can handle viscous or granular media well.

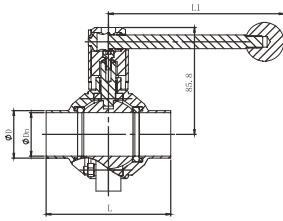
Design Features:

- Small torque moment
- The Handle can be installed on the side of the valve body, regardless of the flow direction.
- It can be equipped with pneumatic and electric actuators.
- CIP cleaning port is available.
- Working temperature: EPDM(-40~+120°C), PTFE(-40~+130°C), FPM(-40~+180°C)
- Pressure of work: 0~10bar
- Material of the part in contact with medium is 304/316L, other part is 304. Sealing material: EPDM, VMQ, FPM
- Connection: clamp, weld, thread, flange
- Size: 1/2"-4"/DN15-DN100
- Standards: 3A, DIN, SMS, IDF, RJT, BPE, ISO

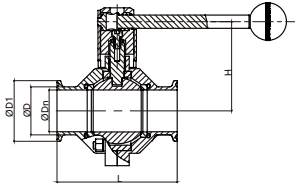


Sanitary Stainless Steel Ball Valve

J&O FLUID CONTROL CO., LIMITED



JOV-BHM2005-11



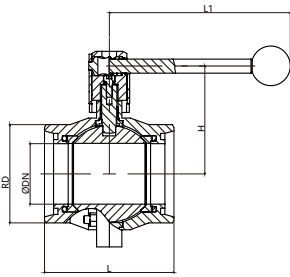
JOV-BHM2005-22

Manual Butterfly Type Ball Valve Weld/Clamp End

Size	ØDn	ØD	ØD1	L	L1	H	□ K×K
1/2"	9.4	12.7	25.2	70	143	60	10×10
3/4"	15.8	19.1	25.2	70	143	60	10×10
1"	22.1	25.4	50.5	85	143	68	10×10
1.25"	28.5	31.8	50.5	85	143	68	10×10
1.5"	34.8	38.1	50.5	100	143	75	10×10
2"	47.5	50.8	64	110	143	85	10×10
2.5"	60.2	63.5	77.5	125	143	107	10×10
3"	72.9	76.2	91	135	186	117	11×11
4"	97.4	101.6	119	170	215	140	14×14

DIN Manual Butterfly Type Ball Valve Male End

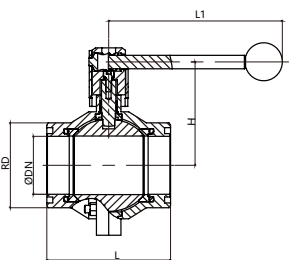
Size	ØDn	Rd	L	L1	H	□ K×K
DN15	15	Rd34×1/8	70	143	60	10×10
DN20	19	Rd44×1/6	70	143	60	10×10
DN25	25	Rd52×1/6	85	143	68	10×10
DN32	31	Rd58×1/6	85	143	68	10×10
DN40	37	Rd65×1/6	100	143	75	10×10
DN50	49	Rd78×1/6	102	143	85	10×10
DN65	66	Rd95×1/6	125	143	107	10×10
DN80	81	Rd110×1/4	135	186	117	11×11
DN100	100	Rd130×1/4	170	215	140	14×14



JOV-BHM2005-33W-D

SMS Manual Butterfly Type Ball Valve Male End

Size	ØDn	Rd	L	L1	H	□ K×K
19	15.8	Rd34×1/8	70	143	60	10×10
25	22.4	Rd40×1/6	85	143	60	10×10
32	28.8	Rd48×1/6	85	143	60	10×10
38	35.1	Rd60×1/6	100	143	68	10×10
51	47.8	Rd70×1/6	102	143	85	10×10
63	60.5	Rd85×1/6	125	143	107	10×10
76	73.2	Rd98×1/6	135	186	117	11×11
89	84.9	Rd105×1/6	135	186	117	11×11
101.6	97.6	Rd125×1/4	170	215	140	14×14
101.6	97.6	Rd132×1/6	170	215	140	14×14



JOV-BHM2005-33W-S